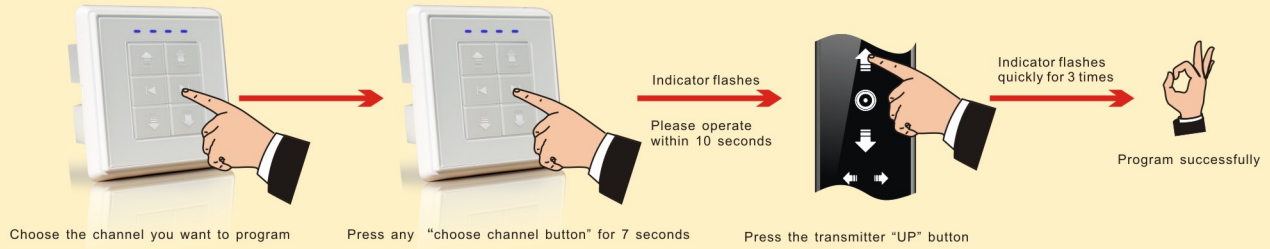


IV. Installation instruction

* 5Mins is the longest operation time for motor. * 0.5S to transfer for up/down for motor.
* Please choose the channel firstly when the transmitter is multi-channel

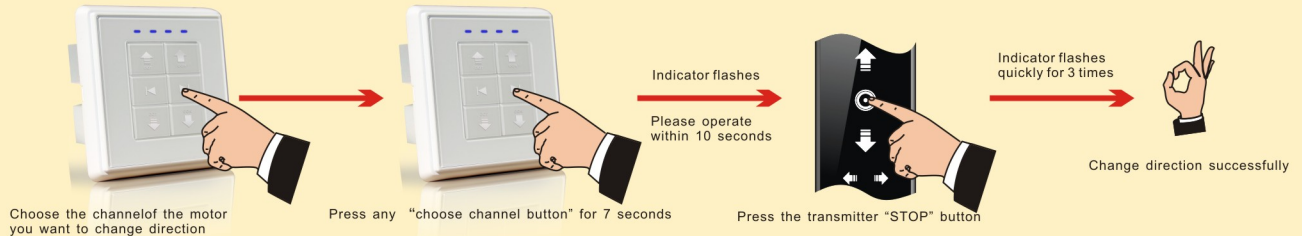
1. Programming



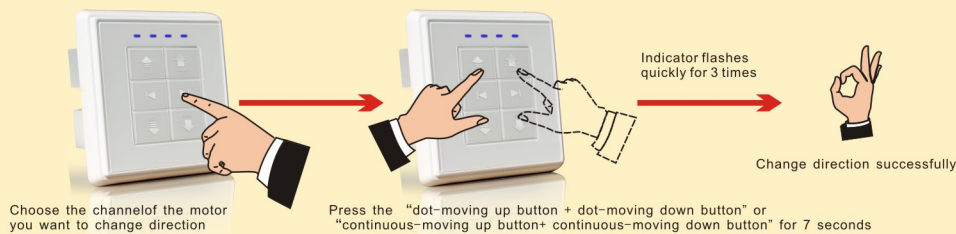
2. Direction conversion

*If the motor operates in a correct direction, no need to do the conversion, if not, it is necessary.

Transmitter direction conversion

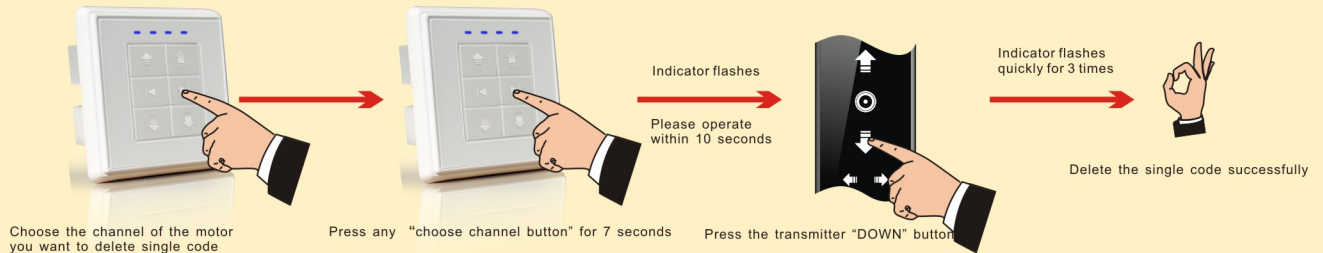


Receiver direction conversion



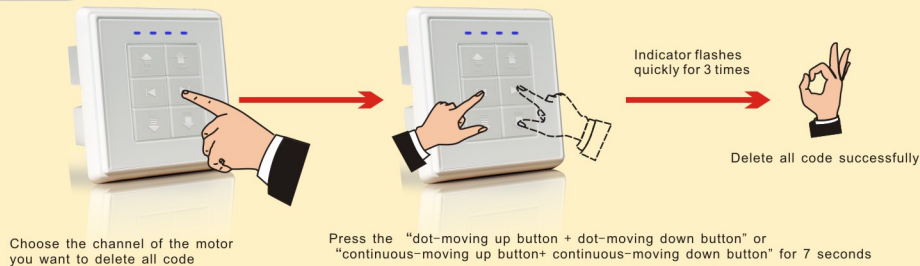
3. Delete single code

*The single channel memory on the transmitter will be deleted after operation



4. Delete all codes

*All memories on the receiver will be all deleted after operation



V. Trouble and shootings

No.	Performance	Checking point
1	Indicator on receiver do not light	Please check wiring connection receiver
2	Indicator on transmitter do not light or poor light	Please check the battery power and installation
3	Transmitter and receiver work commonly, but motor has no rotating	Please check motor wiring